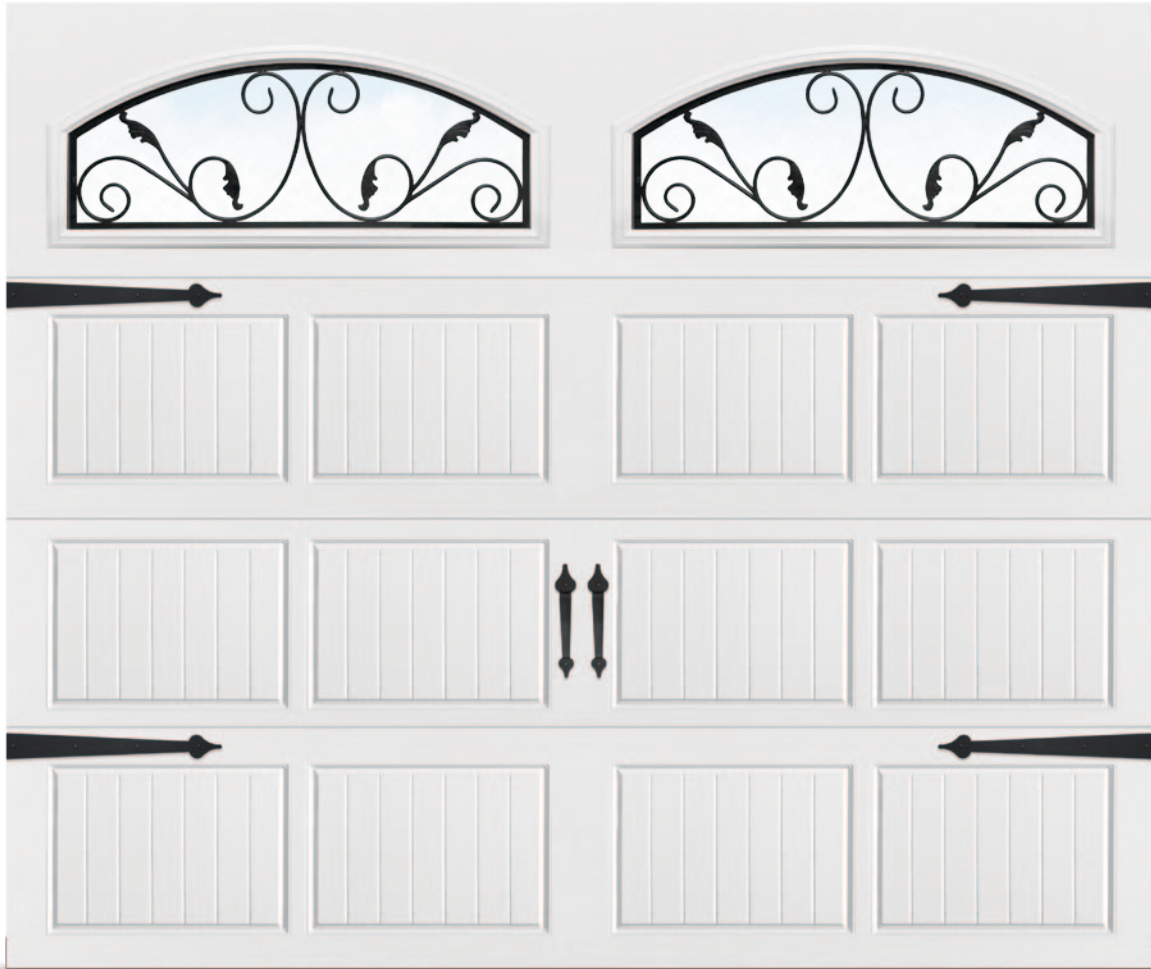




Richardson-Wilcox

Premium Garage Doors



Grandview **XL** Series

Larger windows for a grand view.



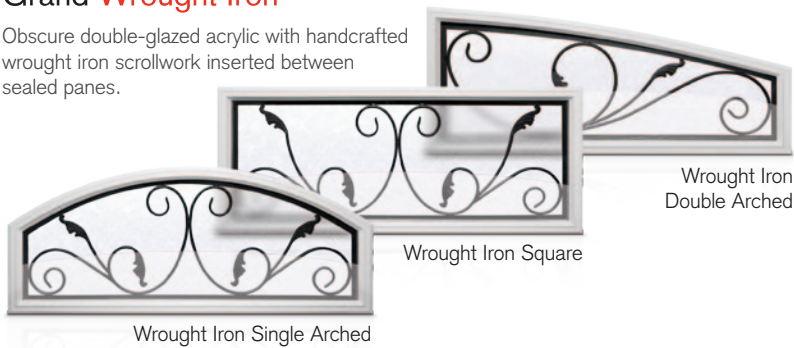
Engineered for beauty

Not your average windows. Not your average door.

We've taken our carriage house Windemere panel and fitted it with a 24" top section to showcase our exquisite windows in an extra-large way. Whether you choose the old-world craftsmanship of the Grand Wrought Iron or the classic simplicity of the Grand Grid or Grand Clear, the view has just improved. Choose one of six colors to compliment your home's exterior and customize with decorative hardware options. The perfect balance between exceptional beauty and enduring quality, a Grandview XL garage door will transform your home from ordinary to extraordinary.

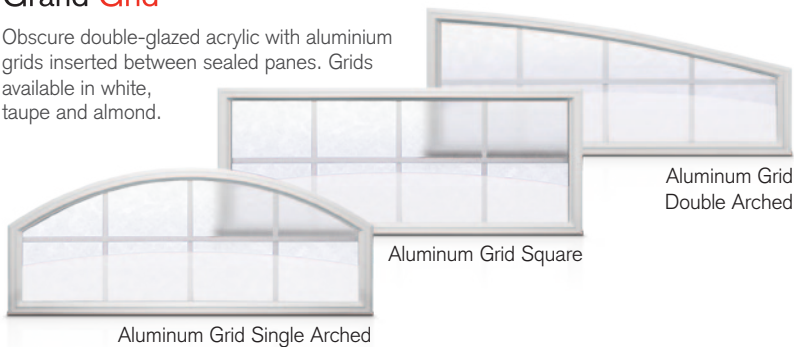
Grand Wrought Iron

Obscure double-glazed acrylic with handcrafted wrought iron scrollwork inserted between sealed panes.



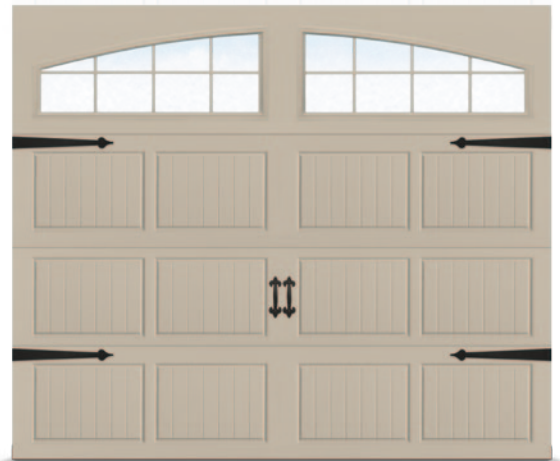
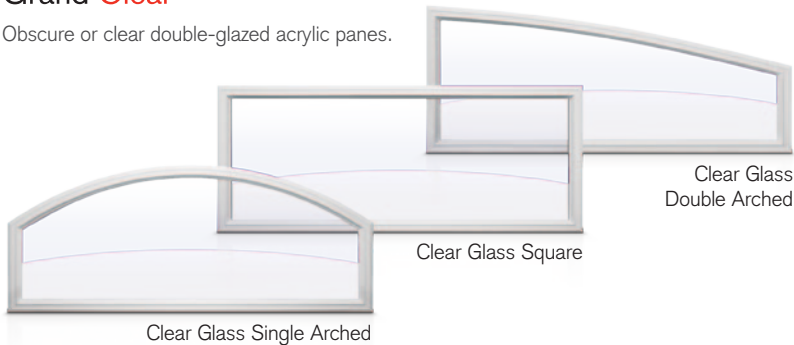
Grand Grid

Obscure double-glazed acrylic with aluminium grids inserted between sealed panes. Grids available in white, taupe and almond.



Grand Clear

Obscure or clear double-glazed acrylic panes.



Engineered for life

Not just another pretty face.

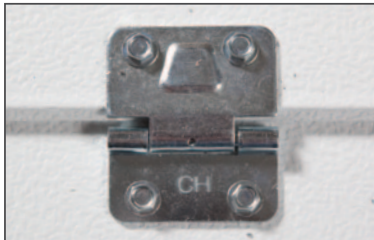
We make beautiful doors. We also care that what's behind them will keep your door worry and maintenance-free for years to come. In business since 1912, we have an established reputation for exceptional quality and unparalleled customer service. Our hardware components are made to the highest industry standards. Our finger-protection system helps prevent injury by keeping fingers out of section joints, inside and out. We believe in our doors and we back that up in writing with our LifeTimer™ warranties.



10 Ball bearing rollers ensure years of smooth and quiet operation.



Tamper-resistant cable attachment cannot be released under tension, helping to prevent accidental injury.



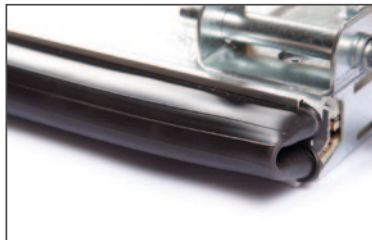
Patented commercial-grade linear-type hinges have the highest strength-to-weight ratio in the industry.



Patented finger-protection system helps prevent fingers from getting pinched between section joints, inside and out.



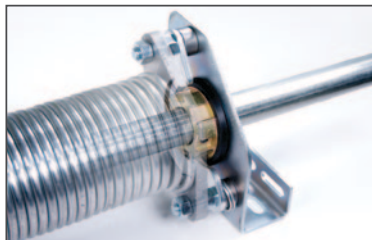
Section joints have a dual seal, ensuring a tight fit and reducing air flow.



3" arctic-grade bottom weather seal helps protect your garage from the elements.



Optional (standard in wood-look colors) high cycle galvanized torsion spring and shaft for years of trouble-free operation.



Optional spring break protection safety device prevents door from dropping more than 1' in event of counterbalance failure.



Find your match.

Choose white, almond, taupe, golden oak, cherry or dark oak for a complete range of custom looks.



Love your handles.

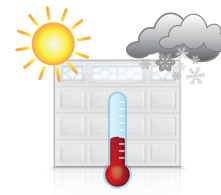
Transform your door to a beautiful reproduction of the past by adding decorative hardware elements with the look and feel of hand-forged wrought iron.

* See the Richards-Wilcox Hardware brochure for complete details.



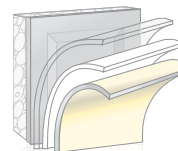
Steel is the new wood.

Authentic woodgrain texture embossed on panels gives you the aesthetic of wood without the cost or hassle of maintaining it.



Weather the storms.

Built to withstand many different weather conditions, our doors have a continuous polyurethane insulated core, arctic-grade bottom seal and dual-seal section joints to help reduce air flow and lower your energy costs.



Built to last.

Door sections are constructed from high-strength, rust-resistant galvanized steel and coated with a baked-on polyester paint finish. Which means your door will last a really, really long time.



Green comes standard.

Our Neufoam™ polyurethane insulation is zero ozone-depleting to help reduce greenhouse gas emissions. Woodgrain embossing simulates real hardwood without depleting our forests.



Peace of mind.

There are enough worries in life - your garage door shouldn't be one of them. When you choose Richards-Wilcox, you've chosen the best garage door you can buy and we'll back that up in writing with our LifeTimer™ Gold* warranty.

* Rust-through/delamination/hardware/springs: as long as you own your home. See warranty for complete terms and conditions.

For additional features and benefits, talk to your dealer or visit rwdoors.com



For additional premium garage door choices,
please contact your local RW dealer.

Professionally installed and serviced by:

Richards-Wilcox Premium Garage Doors – Engineered for life
5100 Timberlea Boulevard, Mississauga, Ontario Canada L4W 2S5

Telephone: (905) 625-0037 | Fax: (905) 625-0057 | Email: info@rwdoors.com

www.rwdoors.com